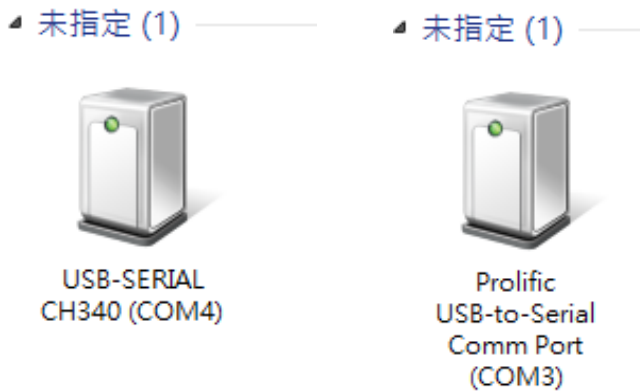


RS232/USB 連線方式

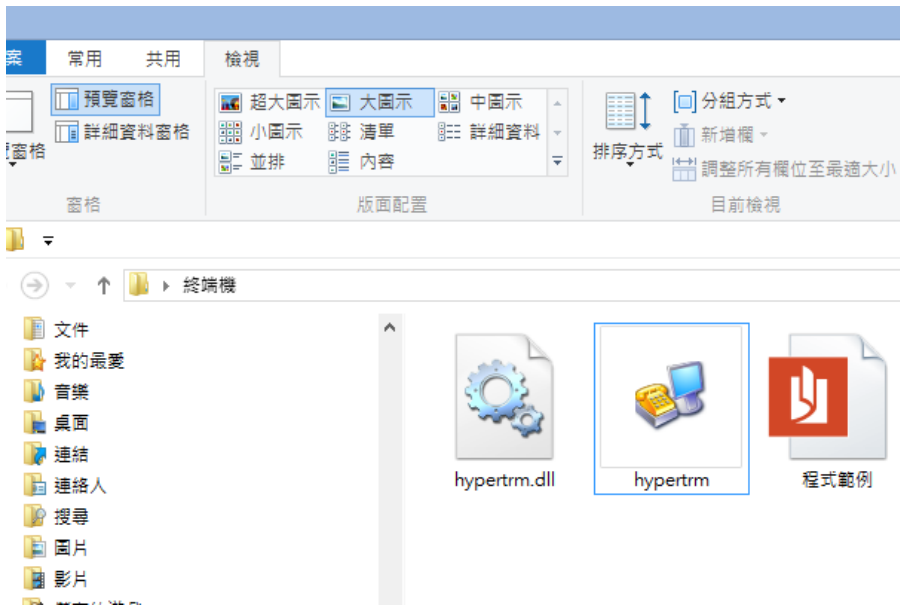
1: 下載 超級終端機



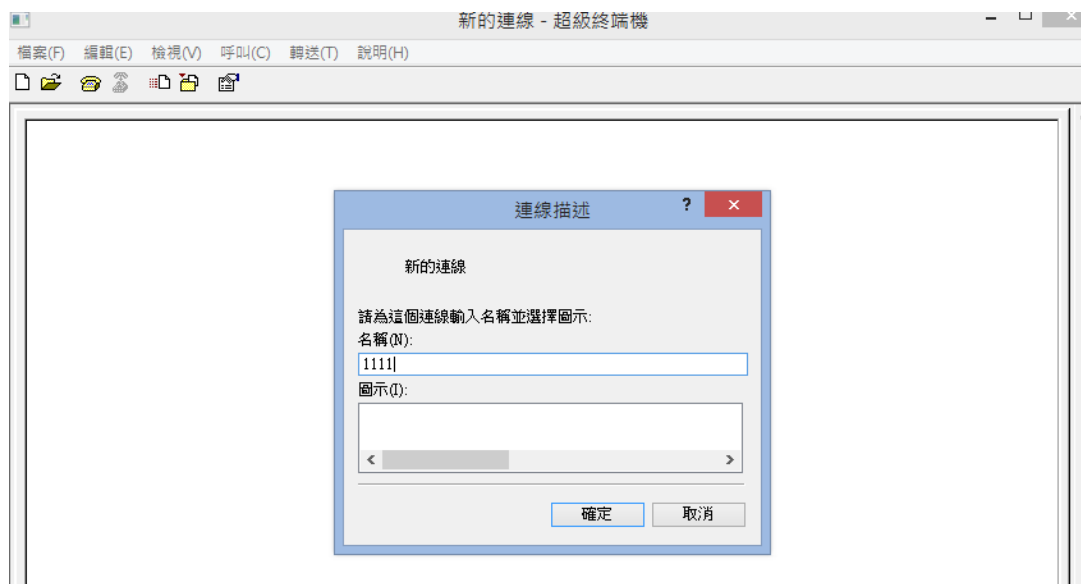
2: 安裝 USB 驅動程式, CH340, 請自行上網蒐尋, 或者用 USB 轉 RS232



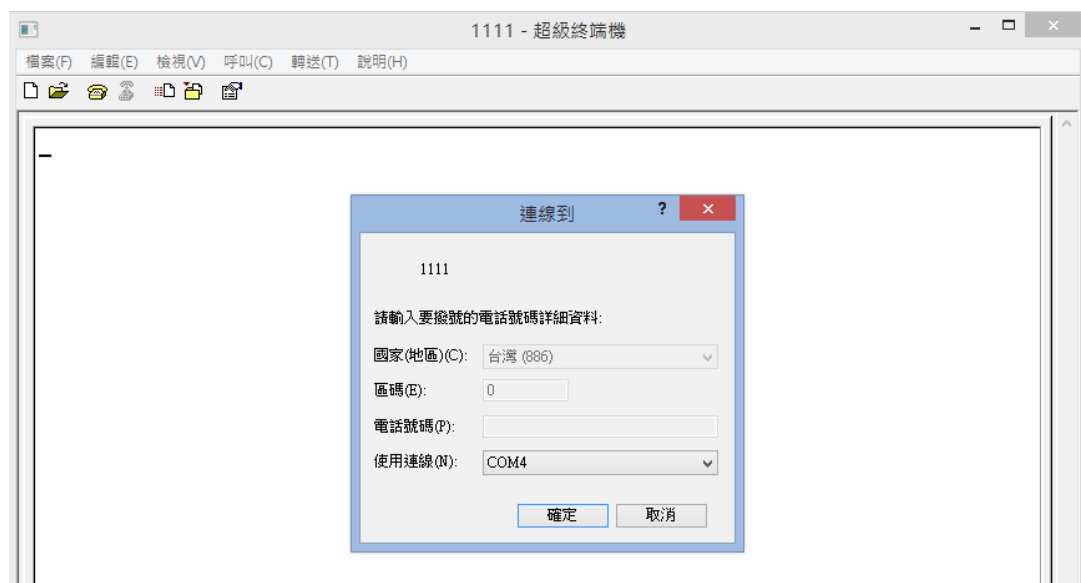
3. 解壓縮後. 執行 Hypertrm



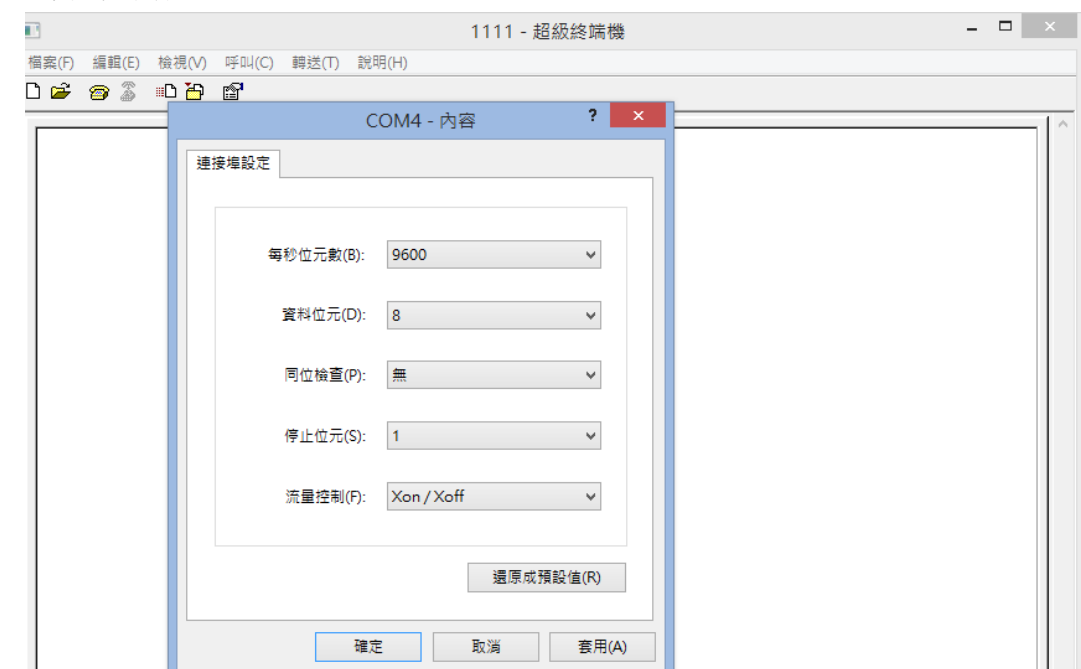
4. 輸入 1 個名稱



5. 選擇目前接到驅動器的 COM



6. 每秒傳輸位元改 9600 流量控制 XON/XOFF



7.按下 ENTER 後. 終端機會顯示 Null command 表示連線完



The screenshot shows a terminal window titled "1111 - 超級終端機". The menu bar includes "檔案(F)", "編輯(E)", "檢視(V)", "呼叫(C)", "轉送(T)", and "說明(H)". The terminal content is as follows:

```
?  
SeTM9Int  
PR9=7323  
XDoCS 0.  
Do RSV  
RSV Done  
ECRs=10000  
VecPos=25  
DoCS 0.  
System standby  
  
Null command  
  
Null command  
-
```

8.按下 MA 10000 馬達立即轉 1 圈,到位後馬達回應 OK



The screenshot shows a terminal window with the same menu bar as the previous image. The terminal content is as follows:

```
Null command  
  
Null command  
  
Null command  
ma 10000  
Ok
```