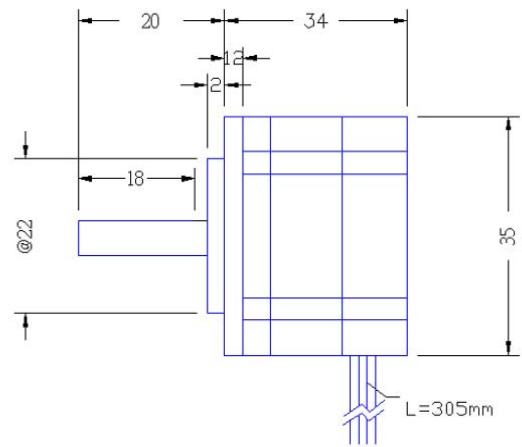
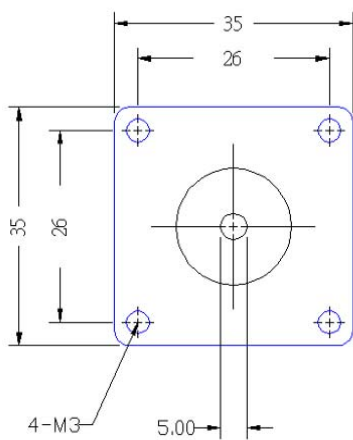




Item (項目)	Specifications (規格)
Step Angle Accuracy (步進角精度)	±5%(full step,no load)
Resistance Accuracy (電阻精度)	±10%
Inductance Accuracy (電感精度)	±20%
Temperature Rise (溫升)	80°C Max,(rated current,2phase on)
Ambient Temperature (環境溫度)	-10°C ~+50°C
Insulation Resistance (絕緣等級)	100MΩ Min,500VDC
Dielectric Strength(介電強度)	500VAC for one minute
Shaft Radial Play (轉軸徑向跳動)	0.06Max,(450g-load)
Shaft Axial Play (轉軸軸向跳動)	0.08 Max,(450g-load)



(Model No.) 型號		Rated Voltage 電壓	Current/phase 電流	Resistance/phase 電阻	Holding Torque 靜力矩	# of leads 引線	Weight 重量	Length 機身長	Rotor Inertia 轉子慣量	AWG 線規
Single Shaft (單出軸)	Double Shaft (雙出軸)	V	A	Ω	Kg-cm		kg	mm	g-cm ²	
35KZM2101A	35KZM2101B	10	0.4	25	0.5	4	0.1	20	8	28
35KZM2102A	35KZM2102B	6	0.5	12	0.45	6	0.1	20	8	28
35KZM2201A	35KZM2201B	12	0.4	30	1	4	0.12	25	10	28
35KZM2202A	35KZM2202B	12	0.5	24	0.8	6	0.12	25	10	28
35KZM2304A	35KZM2304B	3.2	0.75	4.3	0.8	4	0.14	28	10	28
35KZM2303A	35KZM2303B	10	0.5	20	1	4	0.14	28	10	28
35KZM2401A	35KZM2401B	12	0.4	24	1.1	6	0.17	34	14	28