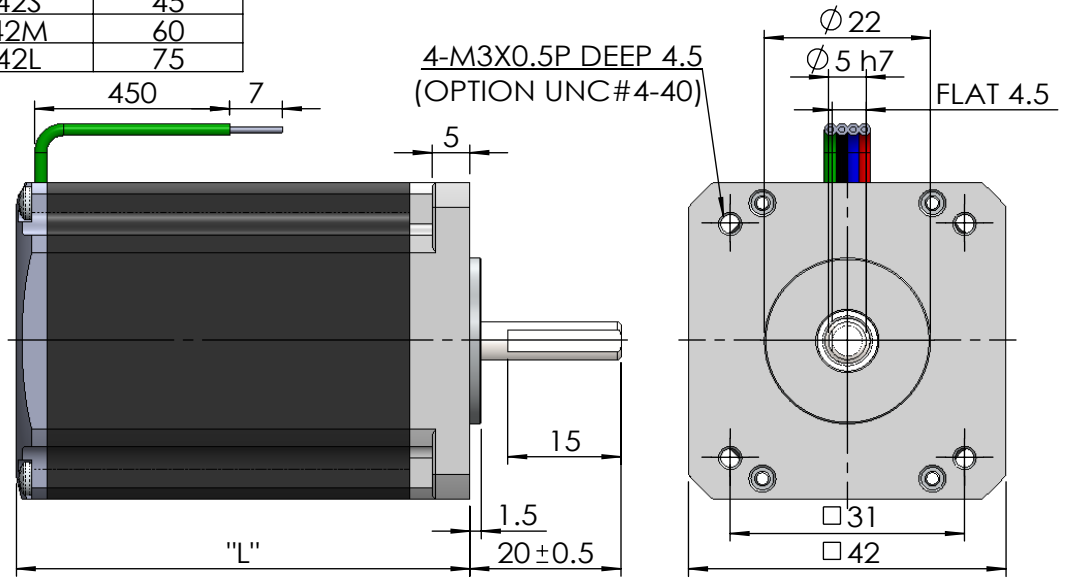
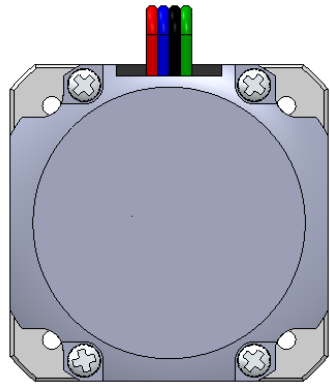




Brushless
SE42

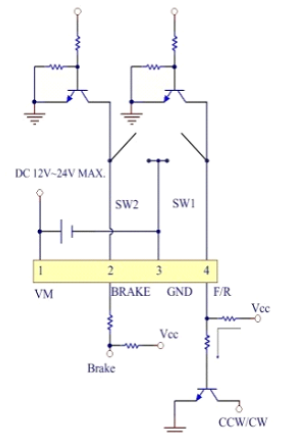
| Model | "L" |
|-------|-----|
| 42S | 45 |
| 42M | 60 |
| 42L | 75 |



| ITEM | PARAMETER | SYMBOLS | UNITS | SE42S | SE42M | SE42L |
|------|----------------------------------|---------|--------|-------|-------|-------|
| 1 | Voltage | Vr | V D.C. | 24 | 24 | 24 |
| 2 | No load speed | No | R.P.M. | 5300 | 5200 | 4800 |
| 3 | No load current | Io | mA | 130 | 140 | 250 |
| 4 | Rated speed at max. efficiency | Nr | R.P.M. | 4423 | 4619 | 4172 |
| 5 | Rated current at max. efficiency | Ir | mA | 754 | 1186 | 1723 |
| 6 | Rated torque at max. efficiency | Tr | Gr-Cm | 273 | 447 | 720 |
| 7 | Rated power at max. efficiency | Pr | W | 12.4 | 21.2 | 30.8 |
| 8 | Efficiency | η | % | 68.6 | 74.5 | 74.6 |
| 9 | Stall torque | Ts | Gr-Cm | 1650 | 4000 | 5500 |
| 10 | Stall current | Is | mA | 3900 | 9500 | 11500 |
| 11 | Peak output power | Pmax | Watts | 22.5 | 53.4 | 67.8 |
| 12 | Terminal resistance | Rt | Ohms | 6.15 | 2.53 | 2.09 |

E Series Integrated Easy Use Driver

| Item | Pin No. | Color of Wire | Symbol | Input or Output | Function | Standard Condition |
|------|---------|---------------|--------|-----------------|--|---|
| I/O | 1 | Red | VM | Input | Power supply positive for drive (Enable) | DC12V~24V MAX. (voltage speed control) |
| | 2 | Blue | Brake | Input | Brake operates | Connect to GND |
| | 3 | Black | GND | - | Power supply GND | |
| | 4 | Green | F/R | Input | H: CCW L: CW | H: GND open L: connect to GND |



Note: The wire connection on positive and GND is not reversible, otherwise it will cause the motor damaged.

4 LINES