



5-phase stepping motor

106mm cir. 103H8958□-□□□□
0.72°/step

● Applicable drivers

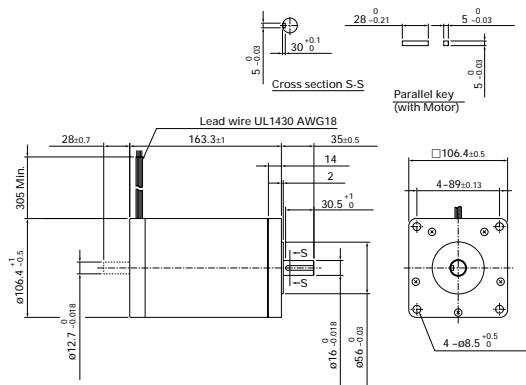
PMAPA 1S6A01	PMAPA 1S6B01	PMM-MA 50034	PMM-MA 50064	PMM-BA 5603 5643	PMM-BA 5604 5644
-----------------	-----------------	-----------------	-----------------	------------------------	------------------------

Specifications

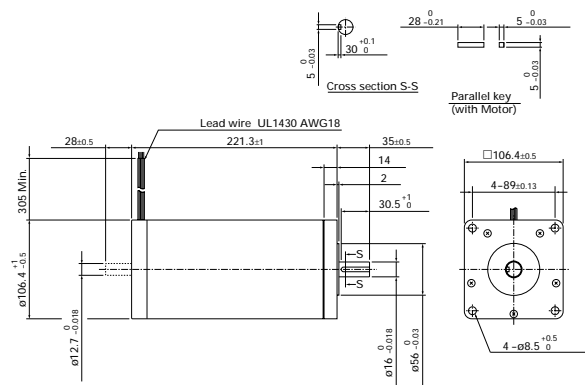
Model number		Holding torque at 5-phase energization	Rated current	Wiring resistance	Wiring inductance	Rotor inertia	Weight
Single-axis	Dual-axis	N.m or more	A/phase	Ω/phase	mH/phase	x 10 ⁻⁴ kg·m ²	kg
103H89582-7041	-7011	10.8	0.75	9	90	14.6	7.5
103H89582-8041	-8011	10.8	1.5	2	26	14.6	7.5
103H89583-7041	-7011	16	0.75	12.5	125	22	10.5
103H89583-8041	-8011	16	1.5	2.9	33.4	22	10.5

Dimensions (unit: mm)

103H89582-7041/8041 (Single shaft)
103H89582-7011/8011 (Double shaft)

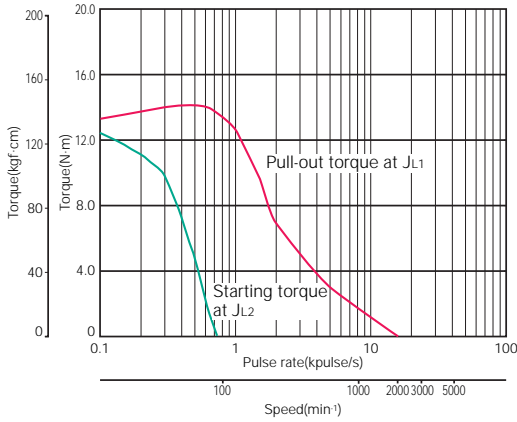


103H89583-7041/8041 (Single shaft)
103H89583-7011/8011 (Double shaft)



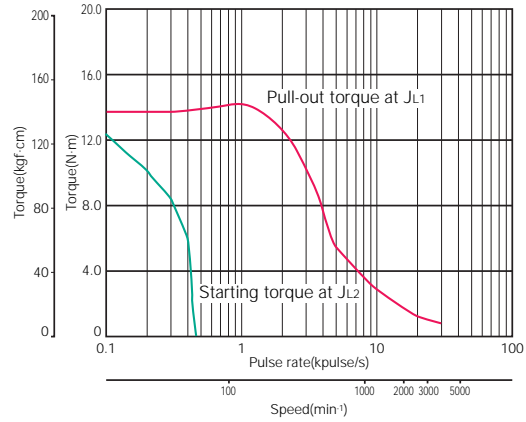
Pulse rate-torque characteristics

●103H89582-7041



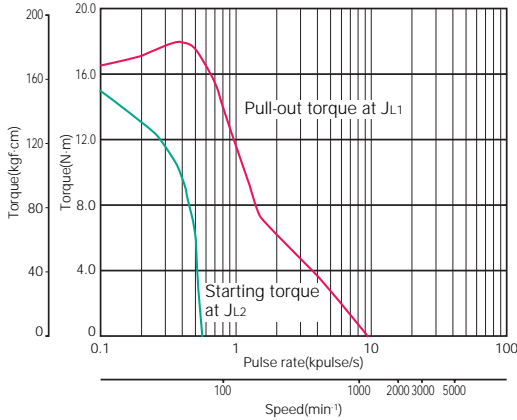
Sanyo constant current circuit
 Source voltage : 100V AC · Winding current : 0.75A/phase
 5-phase excitation (Full step)
 $J_{L1}=43 \times 10^{-4} \text{kg} \cdot \text{m}^2$ (With rubber coupling)
 $J_{L2}=43 \times 10^{-4} \text{kg} \cdot \text{m}^2$ (With rubber coupling)

●103H89582-8041



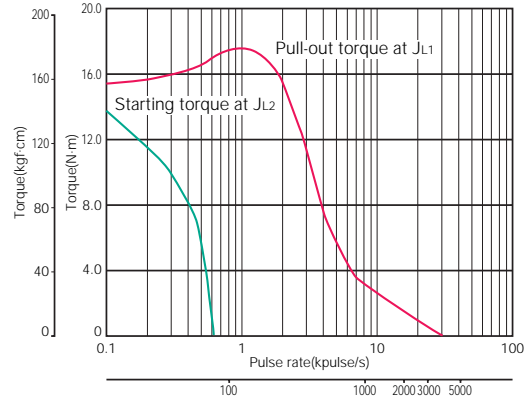
Sanyo constant current circuit
 Source voltage : 100V AC · Winding current : 1.5A/phase
 5-phase excitation (Full step)
 $J_{L1}=43 \times 10^{-4} \text{kg} \cdot \text{m}^2$ (With rubber coupling)
 $J_{L2}=43 \times 10^{-4} \text{kg} \cdot \text{m}^2$ (With rubber coupling)

●103H89583-7041



Sanyo constant current circuit
 Source voltage : 100V AC · Winding current : 0.75A/phase
 5-phase excitation (Full step)
 $J_{L1}=43 \times 10^{-4} \text{kg} \cdot \text{m}^2$ (With rubber coupling)
 $J_{L2}=43 \times 10^{-4} \text{kg} \cdot \text{m}^2$ (With rubber coupling)

●103H89583-8041



Sanyo constant current circuit
 Source voltage : 100V AC · Winding current : 1.5A/phase
 5-phase excitation (Full step)
 $J_{L1}=43 \times 10^{-4} \text{kg} \cdot \text{m}^2$ (With rubber coupling)
 $J_{L2}=43 \times 10^{-4} \text{kg} \cdot \text{m}^2$ (With rubber coupling)

- 39mm (0.36")
- 60mm (0.45")
- 28mm (0.72")
- 42mm (0.72")
- 50mm (0.72")
- 60mm (0.72")
- 86mm (0.72")
- 106mm (0.72")
- CE marked
- Specifications of 5-phase stepping motor
- In-vacuum stepping motor